



T U i i S F i

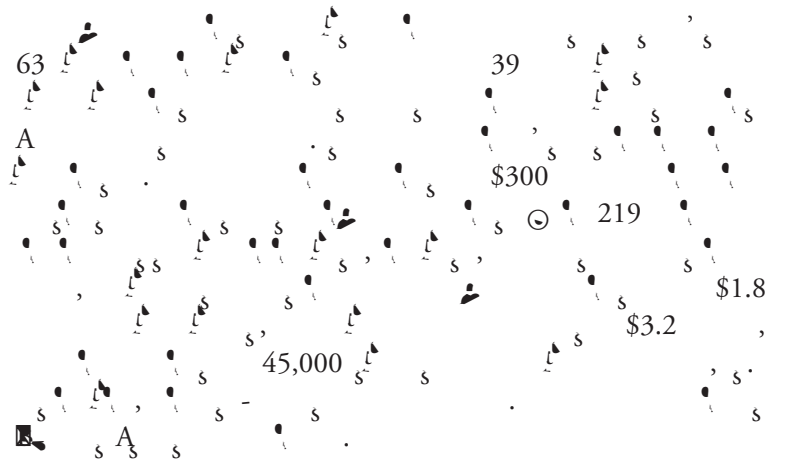





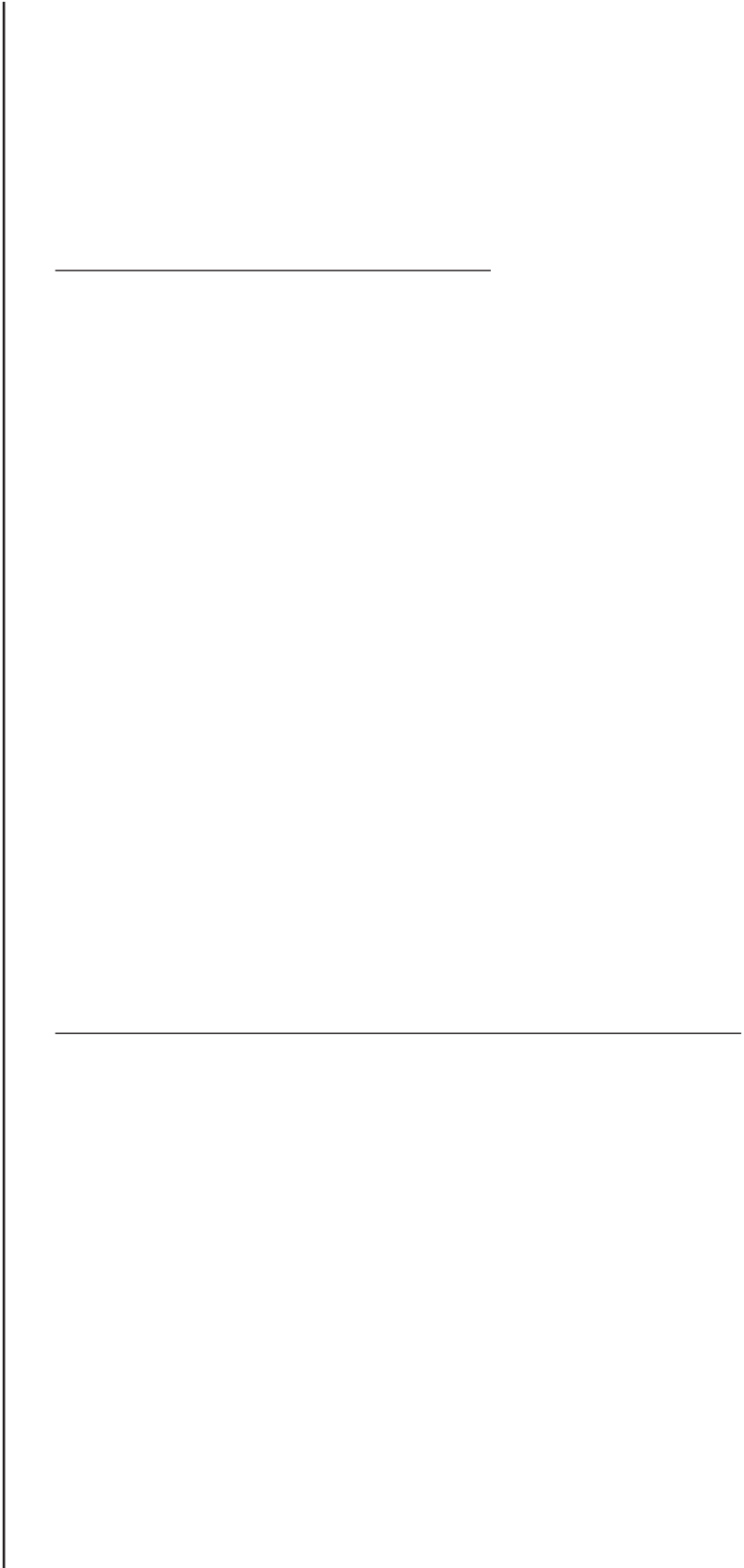


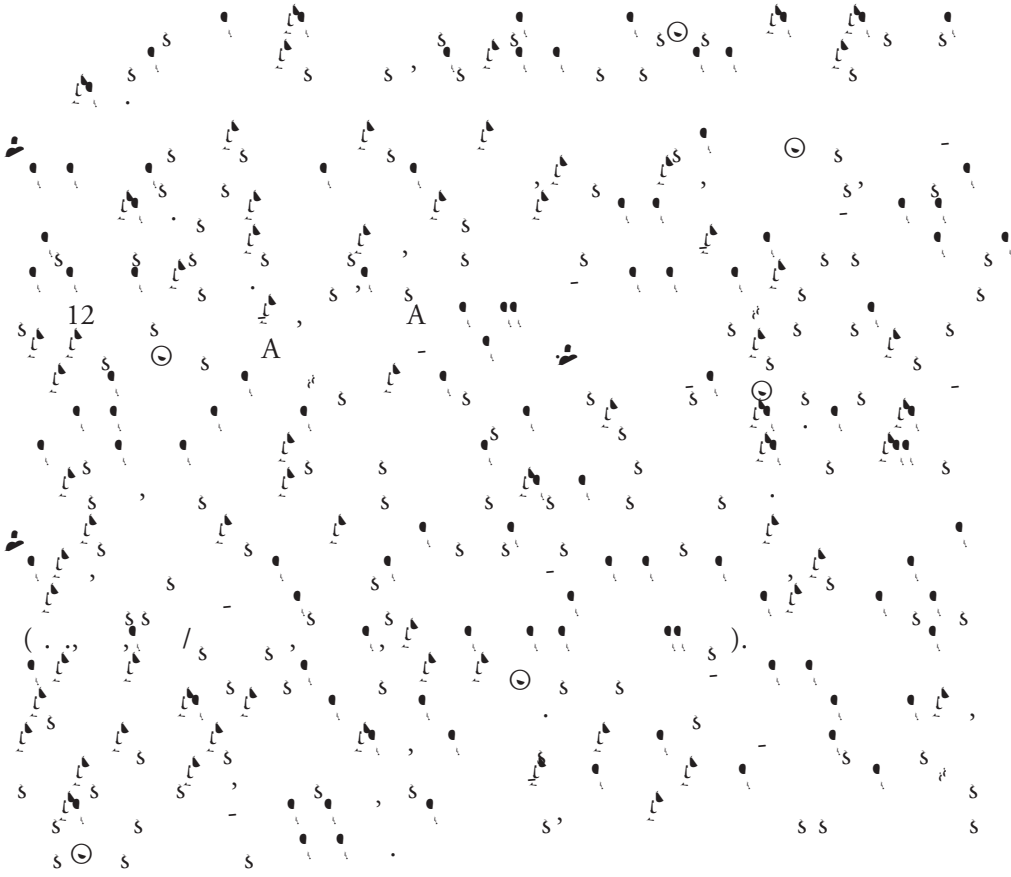
Table of Contents

E i S m m	3
I i	5
P E i	5
P E i F i i	6
. A s A s	s

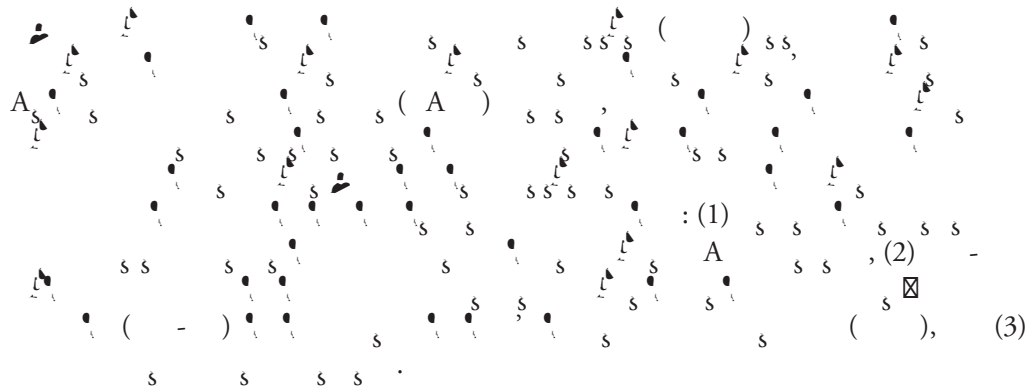
List of Tables

1.     20

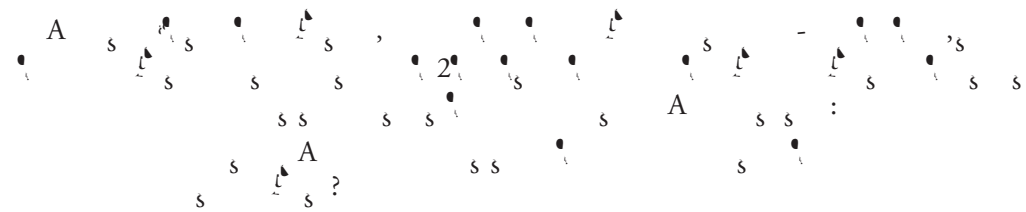




Introduction



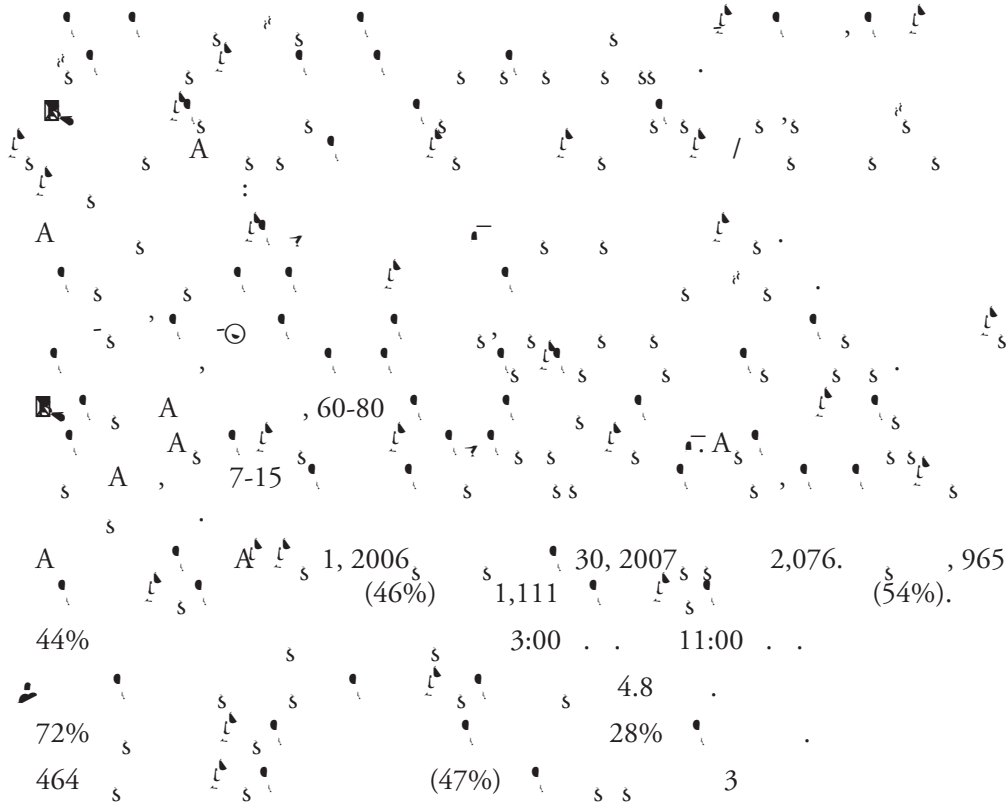
Process Evaluation



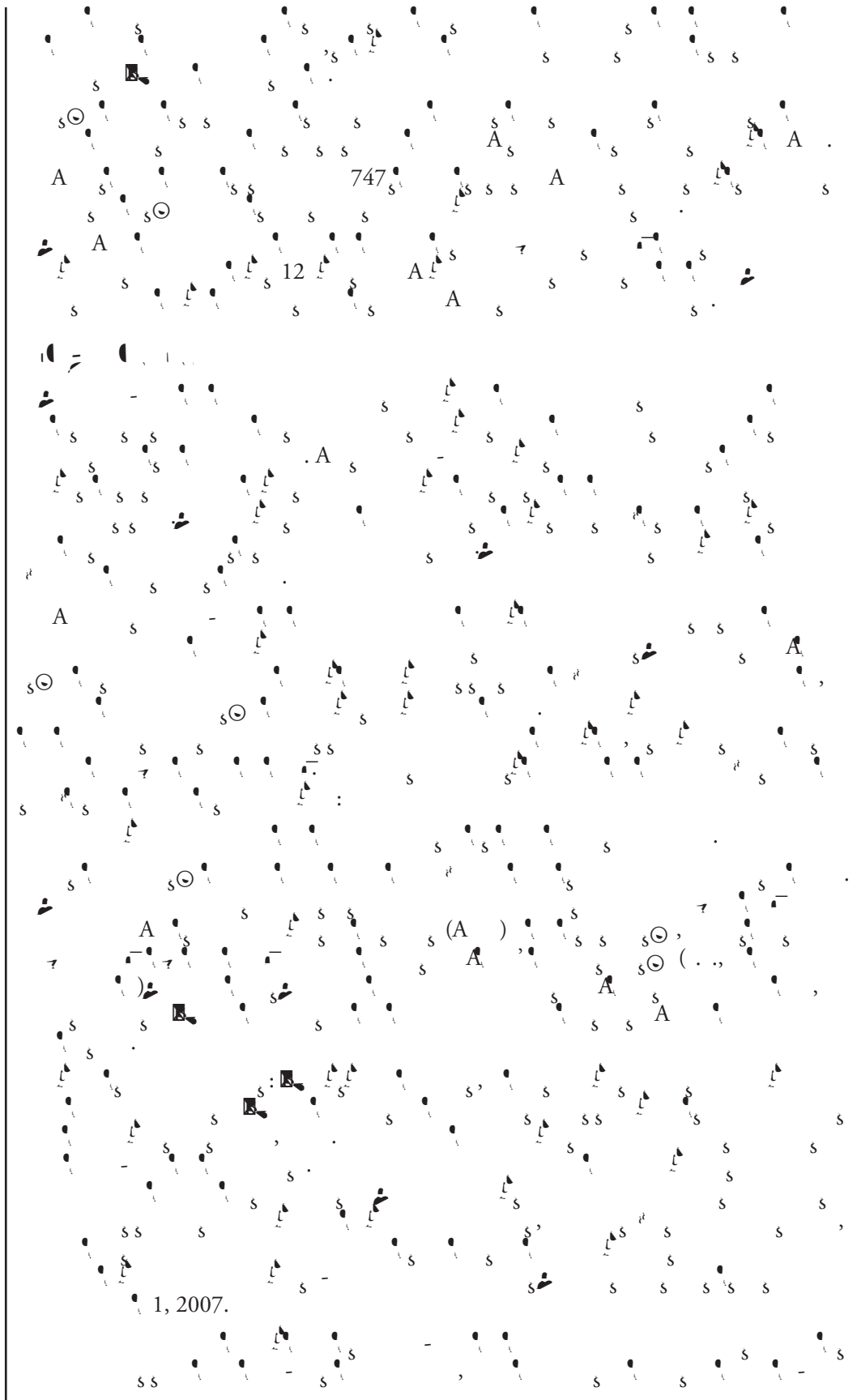
A
 2
 ()
 (A, 2007)
 (A, 2007)
 A
 ()
 ()

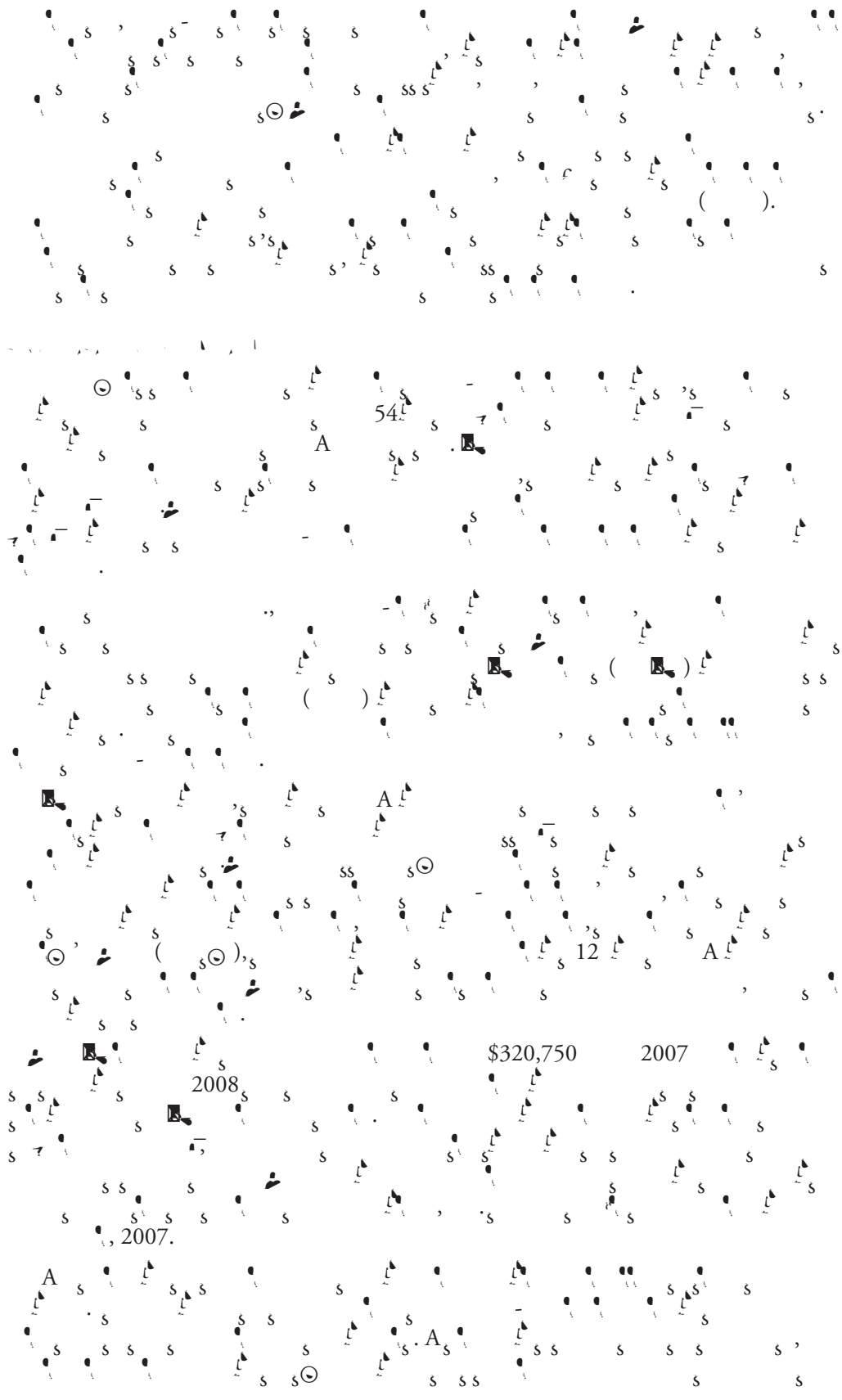
Process Evaluation Findings

A
 A
 (A)
 18
 A
 1, 2006
 30
 A
 10
 A
 2006,
 2007

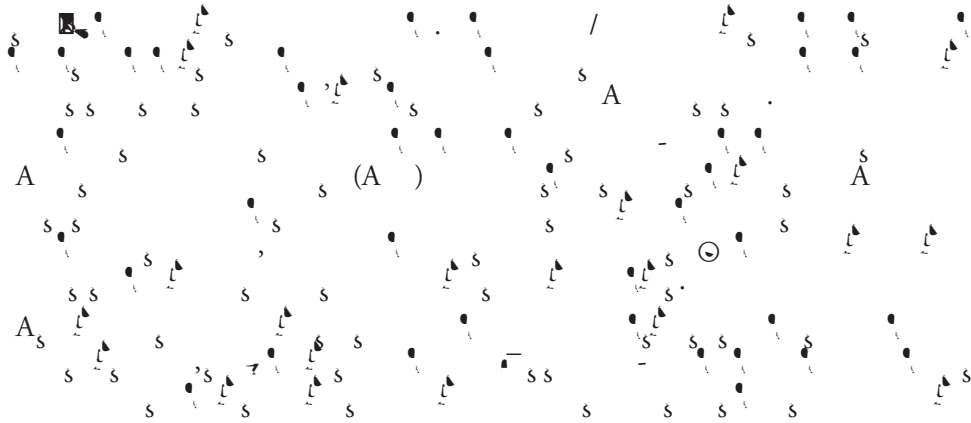


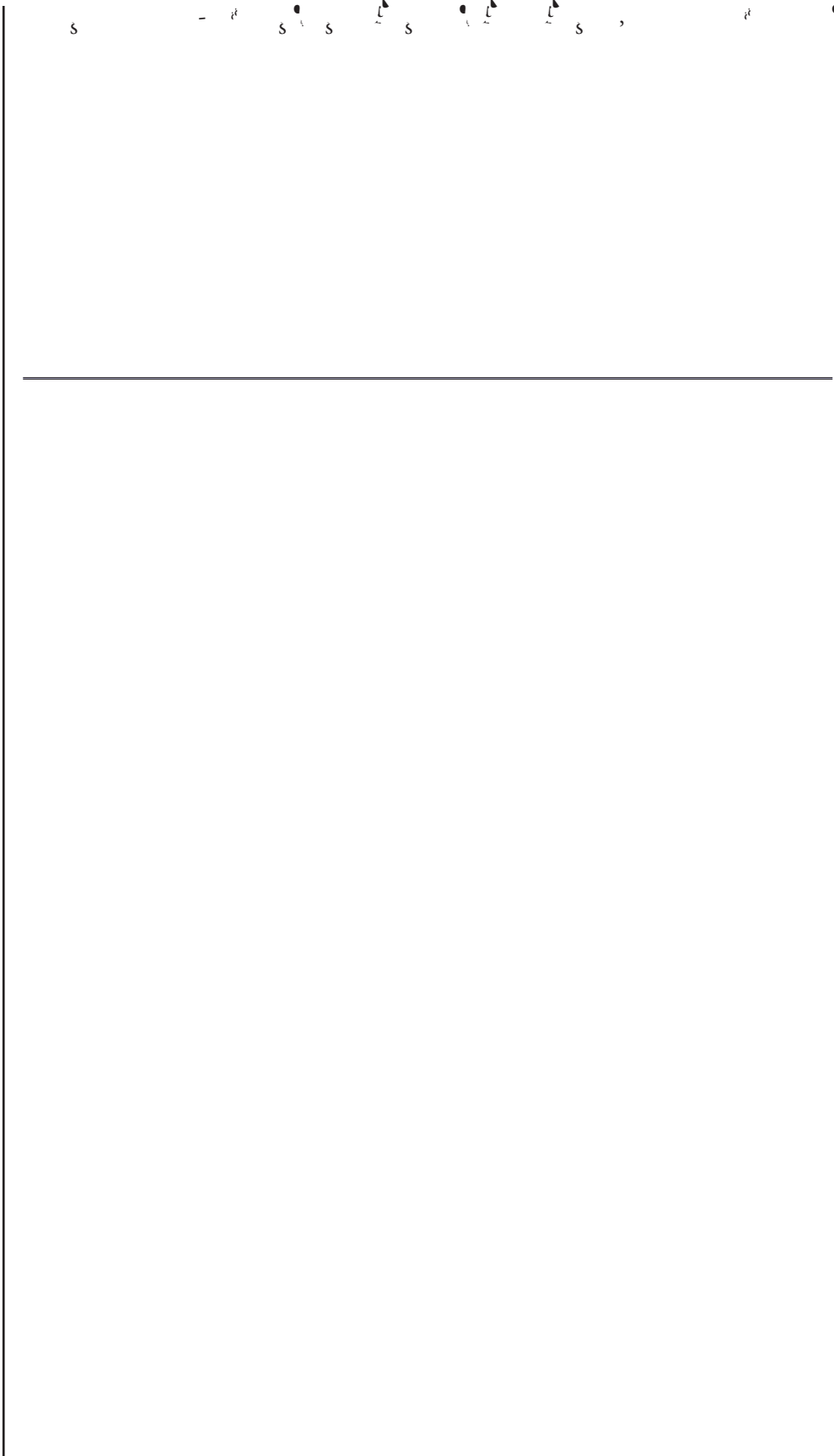
Phase II





Phase III





(67%) 37% 9%

4%

(. ., A.A., A., . ., s .).

1-12,

13

12, 71%

16%

13

44%

22%

10%

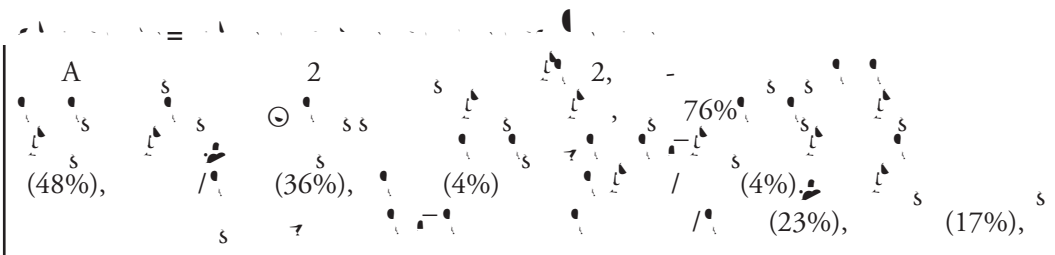
1, 13%

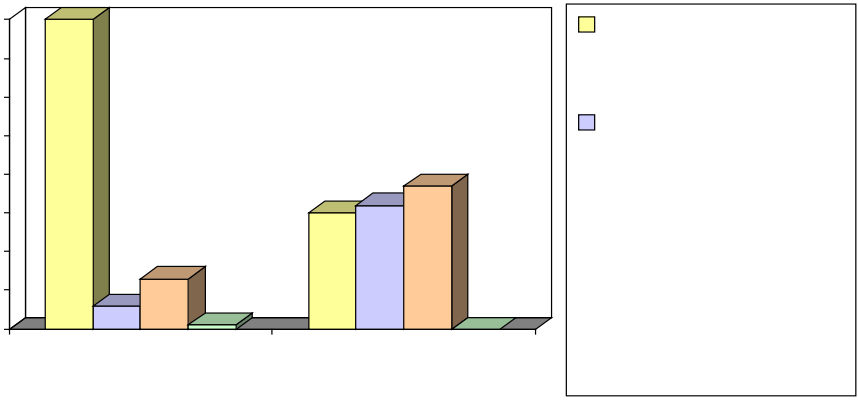
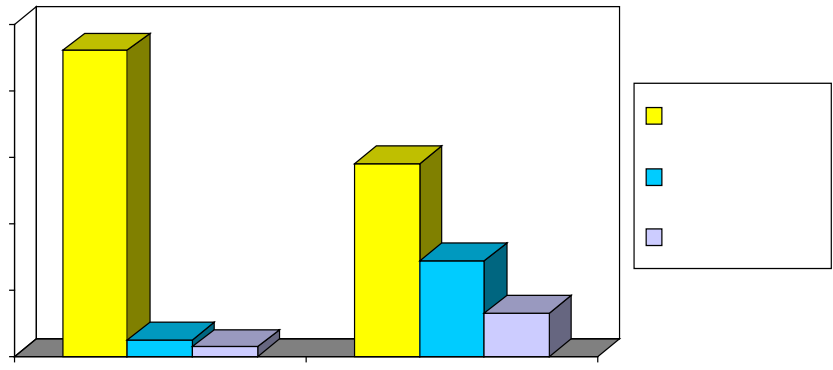
92%

90%

8%

1. A

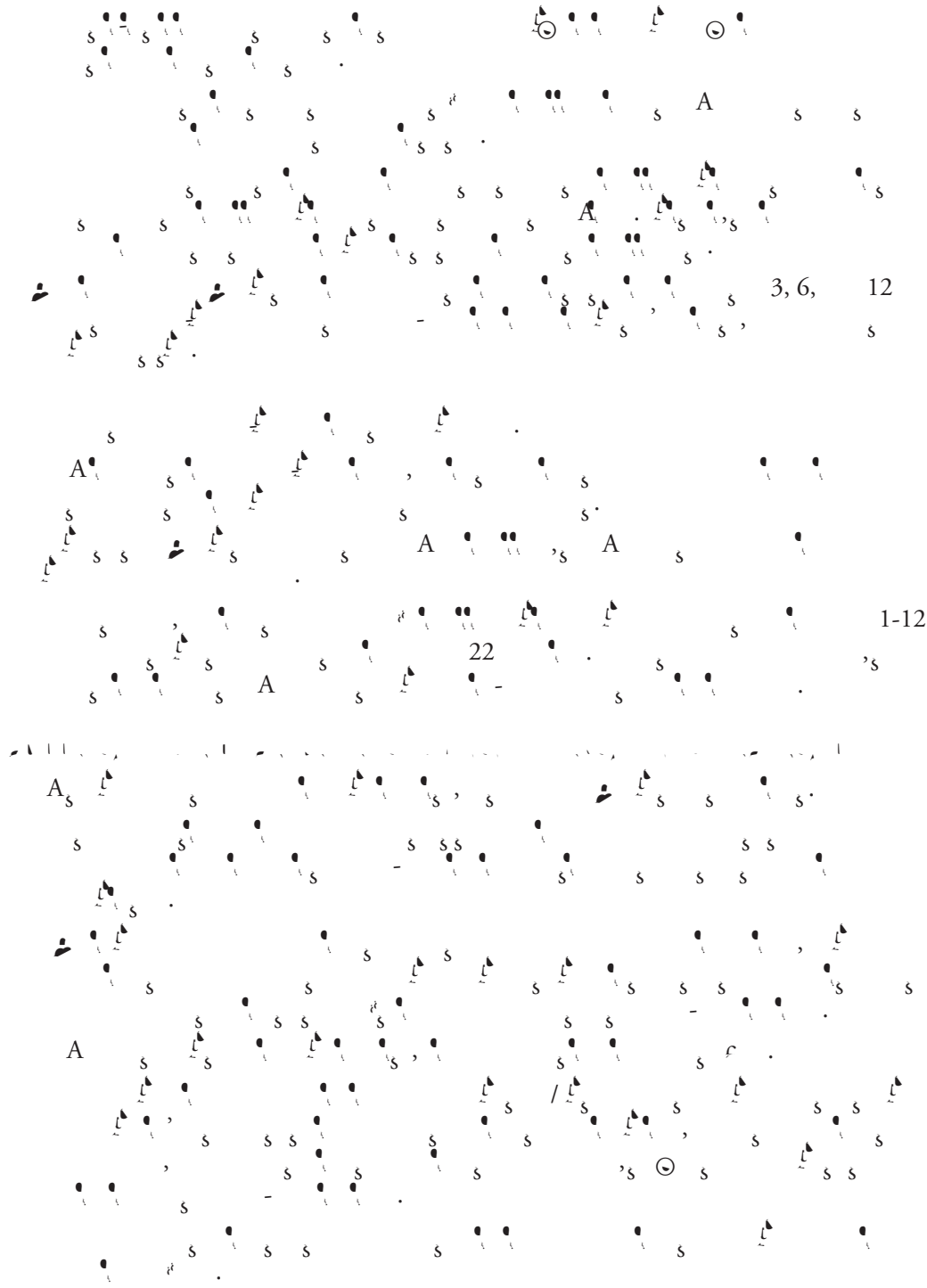




A
 (= 45)
 12-
 (= 63)
 3-
 4). A
 6-
 56%
 52% (= 11)
 6). A
 80%

#1-21 (5). A
 (61%)
 29%
 18
 18%
 27%
 18
 (1-4, = 59)

()
 13-21
 A (6).
 A
 33
 A
 A
 6-7
 A
 -A
 /



	80%	=248
	13%	=41
	6%	=20
	1%	=3
(314)		
	13%	=32

Table 4. Sobriety, Vocational Activities and Housing Status during Follow-up among Successful Graduates

Sobriety		
3 months	56%	=95 (169)
6 months	53%	=63 (120)
12 months	44%	=30 (69)
Vocational Activities		
3 months	62%	=63 (102)
6 months	59%	=47 (80)
12 months	52%	=11 (21)
Housing Status		
3 months	61%	=63 (103)
6 months	56%	=45 (80)
12 months	52%	=11 (21)

Table 6. ARF Referrals-Background and Demographic Characteristics⁷

	45	
	18-63	
	87%	
	3%	
	90%	

_____ 13%

Table 7. ARF Referrals - Substance Abuse Reported at VIP-ER Admission⁸

A	80%	=24
/	8%	=2
/	3%	=1
	3%	=1
/	3%	=1
	3%	=1
	44%	=13
/	20%	=6
	14%	=4
/	10%	=3
A	3%	=1
	3%	=1
	3%	=1
/A	3%	=1
	47%	=14
	37%	=11
1 3	3%	=1
1 2	13%	=4

⁸Analyses are based on ARF referrals from classes 13-21.

Table 8. ARF Referrals - VIP-ER Program Discharge Status⁹

	75%	=18
	8%	=2
	17%	=4
	9%	=2
	48%	=10
	20%	=4
	9%	=2
	14%	=3
	59%	=14
	25%	=6
	16%	=4
	100%	=18
	51%	=3
	33%	=2
	16%	=1

⁹Analyses are based on ARF referrals from classes 13-21.

Table 9. ARF Referrals, Sobriety, Vocational Activities, and Housing at Follow-up for Program Graduates¹⁰

3	39%	=5 (13)
3	50%	=2 (4)
3	50%	=2 (4)

¹⁰Analyses are based on ARF referrals from classes 13-21.